

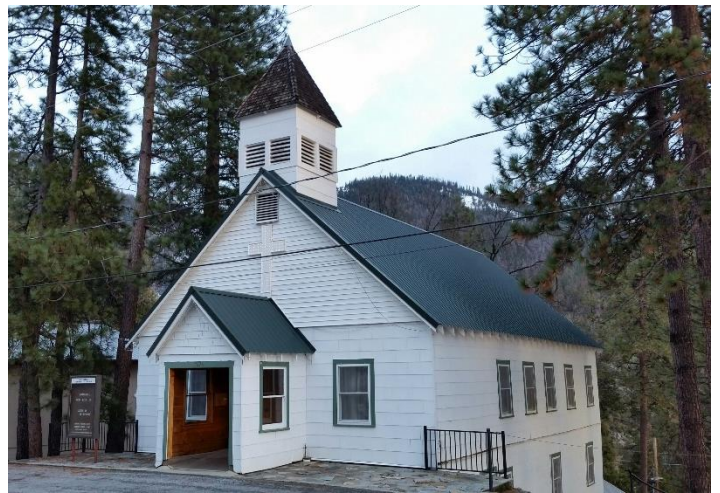
Big Creek Community Church

Big Creek, CA



Big Creek is a very small mountain town (population 175) tucked away in the Sierra National Forest at an elevation of 4,984 ft. It is 55 miles east of Fresno, CA. We have a very small K-8 school, a very small post office, and a very small general store. Our church is very small as well, but the Lord has done some big things here throughout the years! We are excited to see what God has in store for our “what’s next”. Maybe it will include you! We know one thing for certain...whatever He does will be for our good and His glory. We serve a great **BIG** God!

[Big Creek Community Church](#) is the one and only church in town! It was founded in 1953 when a group of women urged their husbands (unbelievers at the time) to build a place of worship where they could teach Sunday School and have worship services. The church was built and the men became Christians in the process! Like many small-town churches, it has experienced exciting times of growth and times when membership could be counted on fingers. God is ever-faithful and has always supplied a core group of dedicated believers to keep His Light shining in this beautiful corner of His creation.



There is no shortage of information, images, and fun facts about Big Creek on the internet.

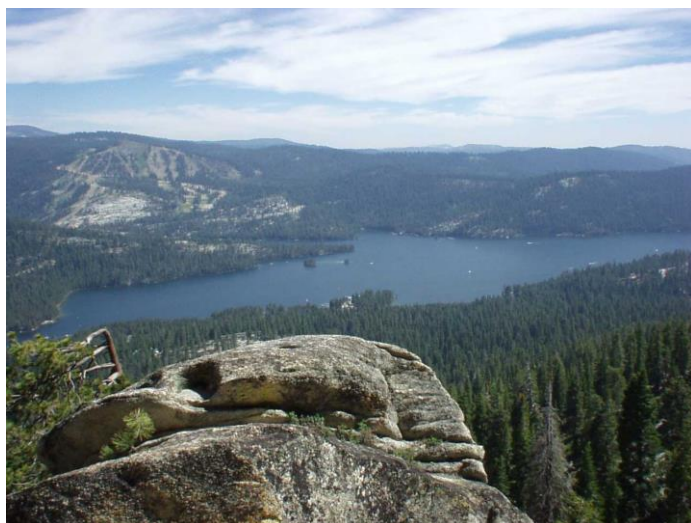
[Wikipedia](#) has a good article that supplies basic information. What the facts do not supply is the answer to this question – What is it like to live in Big Creek?

Though we live in the forest and resort areas are very near, Big Creek is a working person’s town. Southern California Edison is the main employer and the reason Big Creek exists. SCE operates a hydroelectric facility that spans several miles above and below Big Creek.

In many ways living here is like stepping back in time. Children can safely go out and play with their friends. They may not come home until mom posts on our Facebook “Big Creekians” page, “Has anyone seen Cody? Please send him home!” Yes, grocery shopping is at least an hour away. However, neighbors are used to the question, “Do you have a lemon I can borrow?”. We pull together and we lend a hand. We know our neighbors and we love our town!

Driving on the winding mountain roads becomes second nature. Most residents are on the road at least once a week. Medical appointments, children’s activities, shopping...something always comes up. You might find yourself picking up a prescription or a gallon of milk for a friend! We get snow in the winter but the roads are well groomed. The average yearly rainfall is 42”. Summertime highs are 80°- 90°. There is not a doctor in town but we do have a superior group of first responders in our Volunteer Fire Department. There is also an SCE heliport that can be utilized for emergency services and an ambulance stationed in Shaver Lake (30 minutes away).

[Big Creek School](#) is Preschool – 8th grade. This year enrollment for the entire school is 53 students! There is a preschool, then K/1, 2/3, 4/5, and 6/7/8 combination classes. The school has a wonderful family atmosphere and students receive a great deal of individual attention. For grades 4-8 there is a band program. For each student in K-8 a Chromebook is available. The school has a full-sized swimming pool, a 3-lane bowling alley, and a ski program in the winter. For six Fridays school is held at China Peak Mountain Resort! Students swim competitively in the Spring and also have team sport opportunities such as Football, Volleyball, Track, Cross Country, and Basketball. High school students ride the bus to Sierra High School (a 55 minute trip).



Local Recreation –

There are two large lakes (Shaver and Huntington) 20 minutes away. If the roads are snowy the travel time might double! There are many places to hike and explore in the area. Fishing, boating, backpacking, four-wheeling, camping, rock climbing, horseback riding, and skiing are activities enjoyed by many residents and visitors. There is sailing at Huntington Lake and a trophy trout program at Shaver Lake. Stargazing is possible, even with the naked eye, since there are no big city lights to compete with God’s handiwork!

The Parsonage –

Located on Point Road in Big Creek, the church parsonage has four bedrooms, one bathroom, living room, dining area, and a large utility room. The yard is kid-friendly with a spot for a garden as well. There is a carport but not a garage. There is a deck outside the upstairs back door. Beautiful sunsets and animal watching!



Websites you may find helpful:

Big Creek Community Church - <http://bigcreekcommunitychurch.org/home>

Big Creek School - <https://www.bigcreekschool.com/>

Wikipedia page for Big Creek, CA – https://en.wikipedia.org/wiki/Big_Creek,_California

National Weather Service (Big Creek/Shaver Lake) - <https://forecast.weather.gov/MapClick.php?lat=37.206110000000024&lon=-119.24784#.XEZtUc17nb1>

Camp Sierra (This a nearby group camp which also has many cabins owned by vacationers. Several folks from Camp Sierra visit our church regularly) - <http://campsierra.org/>

Camp Edison (at Shaver Lake) - <https://www.sce.com/about-us/community/camp-edison?from=/campedison>

Recreation.gov (state campgrounds in the Shaver Lake/Huntington Lake recreation area) - https://www.recreation.gov/search?q=Shaver%20Lake%20Recreation%20Area&entity_id=247718&entity_type=facility

Sierra National Forest - <https://www.fs.usda.gov/sierra/>

CA Dept. of Fish and Wildlife (search Fresno County) - <https://www.wildlife.ca.gov/>

Central Sierra Historical Society (at Shaver Lake) - <http://www.sierrahistorical.org/>

China Peak Mountain Resort (40 minutes if roads are snowy) - <http://www.skichinapeak.com/>

Airbnb (for the Inn at Big Creek...we only have one!) - <https://www.airbnb.com/rooms/25976055?location=Big%20Creek%2C%20CA&adults=1&guests=1&s=iQBZEUK>

Real Estate – Homes for sale in Big Creek are very limited. If you conduct a search, make sure to look at a map to refine your search to Big Creek only. All searches give results for Camp Sierra (no full-time residents allowed), Huntington Lake and Shaver Lake.